

Evacuation & Alerting Overview

VENTURA COUNTY SHERIFF
EMERGENCY SERVICES



LIVE

Types of Evacuations

Evacuation Order

- Conditions exist that **SERIOUSLY IMPERIL** or **ENDANGER** the lives of those in the defined area.
- The danger is **IMMINENT!**
- **Leave the area immediately**

Evacuation Warning

- The threat to lives is **NOT YET IMMINENT**
- Residents with access & functional needs should consider leaving now.

Shelter in Place

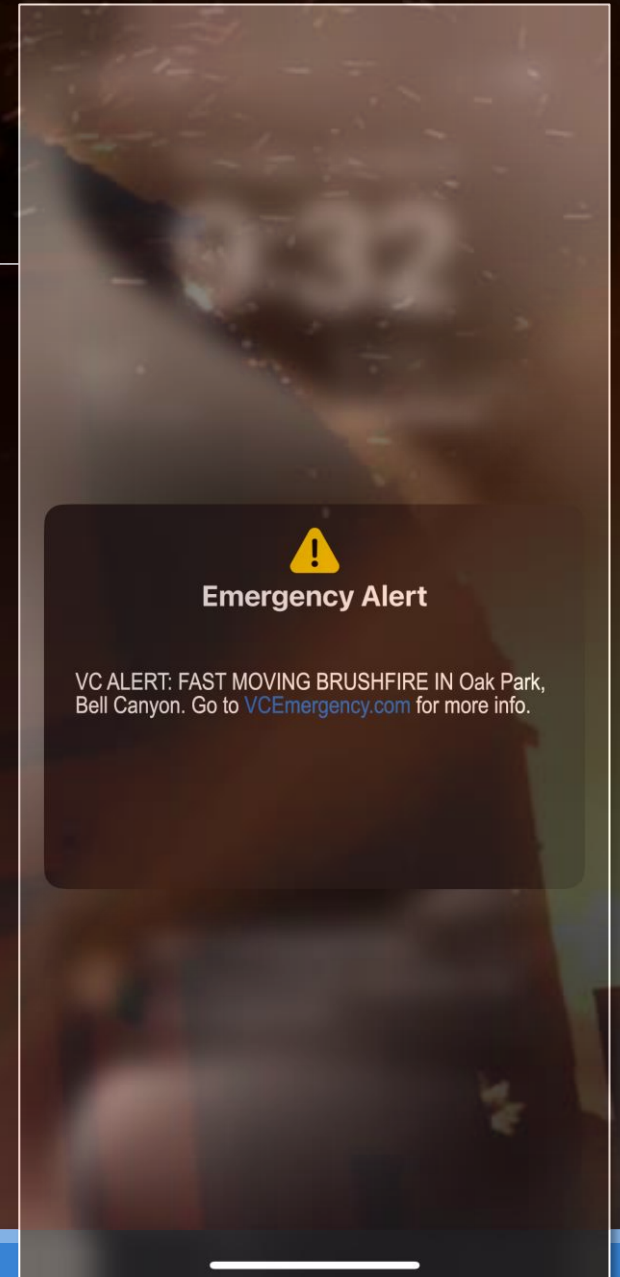
- Conditions exist that may **ENDANGER** the lives of those in a defined area.
- Access to the area under a shelter in place order may or may not be restricted by a soft or hard closure.
- Residents should select an interior room or rooms within their home or business with no or few windows and taking refuge there.

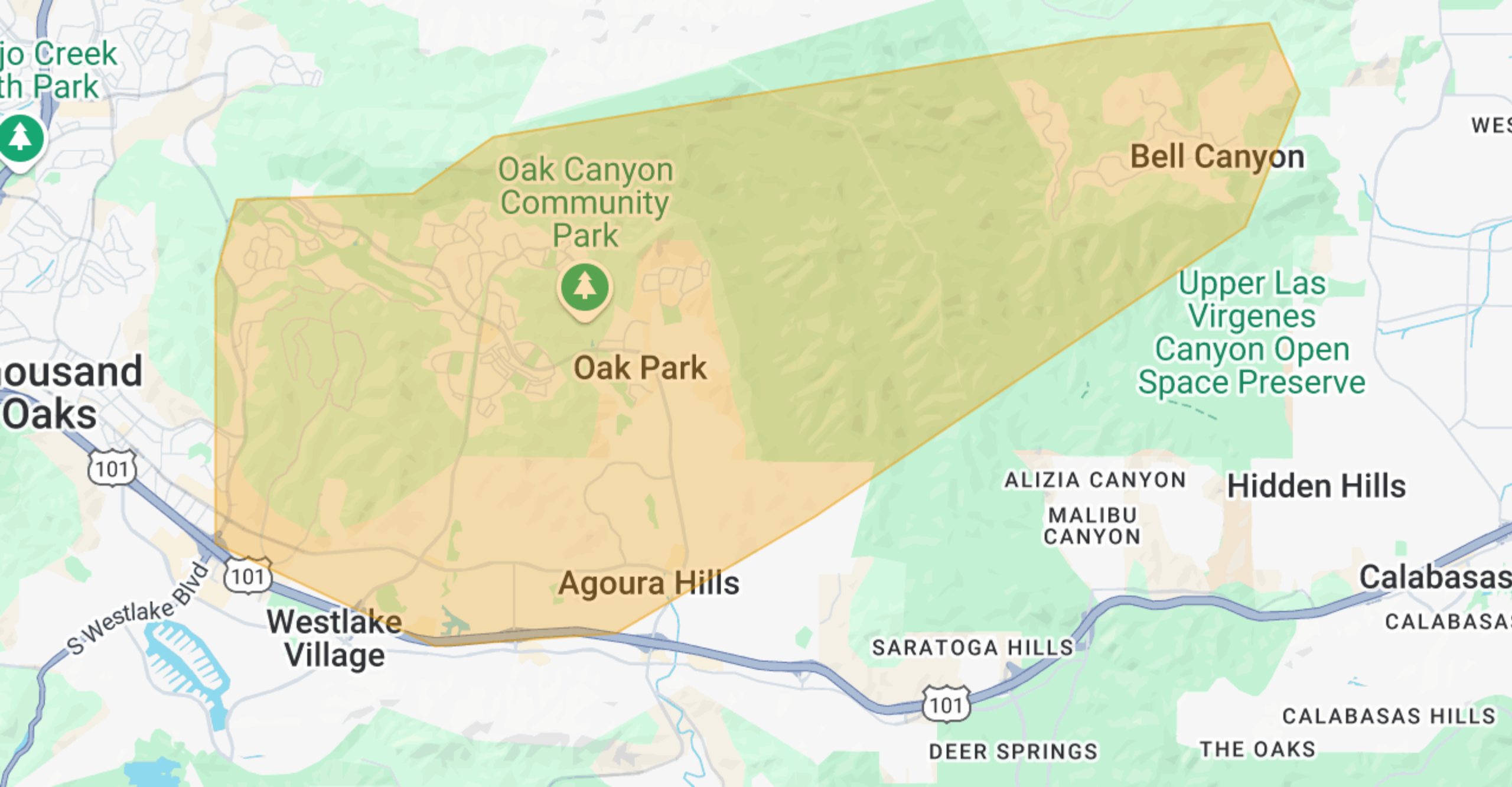


How Will I Know?

Wireless Emergency Alert (WEA)

- Generic message that is usually non-specific
- Will provide basic information about the hazard and remind residents where they can find updated information
- Does not require the recipient to be registered with a system to receive the message
- Recipients are determined by their proximity to cellular towers
- Bleed over from neighboring jurisdictions can occur





jo Creek
th Park



Oak Canyon
Community
Park



Oak Park

Bell Canyon

Upper Las
Virgenes
Canyon Open
Space Preserve

ousand
Oaks

101

101

Agoura Hills

Westlake
Village

ALIZIA CANYON
MALIBU
CANYON

Hidden Hills

Calabasas
CALABASAS

S Westlake Blvd

SARATOGA HILLS

101

DEER SPRINGS

CALABASAS HILLS

THE OAKS

How Will I Know?

VC Alert Notification

- Contact information is purchased from third-party data aggregator & provided by residents that opt-in at VCAAlert.org.
- Information is sent to residents based on the address we have on file.
 - Text Message
 - Voice Phone Call
 - Email
 - Fax



How Will I Know?

VCEmergency.com

The screenshot shows a web browser window with three tabs: 'Kenneth Fire | CAL FIRE', 'VENTURA COUNTY EVACUATIO...', and 'VC Emergency'. The address bar shows 'vcemergency.com'. The website header includes the 'VC EMERGENCY' logo with a red exclamation mark icon, and navigation links for 'Home', 'Evacuation Info', 'UAV Operations', 'Community', 'Contact Us', and 'Español'. Below the header, there is a section titled 'Emergency Information for Neighboring Counties' with three buttons: 'County of Los Angeles', 'City of Los Angeles', and 'County of Santa Barbara'. A timestamp indicates the page was 'Updated 1/29/2025 at 2:15 PM'. The main content area states: 'There are currently no active incidents impacting Ventura County.' Below this, a section titled 'EXTENDED POWER OUTAGES DUE TO PUBLIC SAFETY POWER SHUTOFFS' provides information about power outages caused by Public Safety Power Shutoffs (PSPS) by Southern California Edison (SCE). It explains that these outages are a precautionary measure to reduce wildfire risk and that the County of Ventura has no control over when power is restored. It encourages residents to share concerns with the California Public Utilities Commission. A note states that SCE accepts claims for food loss due to these shutoffs. A list of items needed for a claim is provided: an itemized list of spoiled food, receipts for spoiled food or other documentation, and completion of an online claim form. The bottom of the page includes a small accessibility icon and a footer with the time '7:25 AM' and date '1/30/2025'.

VC EMERGENCY
OFFICIAL VENTURA COUNTY INCIDENT INFORMATION SOURCE

Home Evacuation Info UAV Operations Community Contact Us Español

Emergency Information for Neighboring Counties

County of Los Angeles City of Los Angeles County of Santa Barbara

Updated 1/29/2025 at 2:15 PM

There are currently no active incidents impacting Ventura County.

EXTENDED POWER OUTAGES DUE TO PUBLIC SAFETY POWER SHUTOFFS

We acknowledge the ongoing power outages affecting many Southern California Edison (SCE) customers due to the Public Safety Power Shutoffs (PSPS). These outages are a precautionary measure implemented by SCE to mitigate the risk of wildfires, particularly during times of extreme weather conditions such as high winds, dry conditions, and high temperatures. SCE activates PSPS when these conditions create a significant risk of power lines sparking and igniting fires in vulnerable areas. The County of Ventura and cities within the County of Ventura have no control over when power is de-energized or when it will be restored. We understand the hardship these extended outages cause for our residents, and we continually advocate for SCE to restore power to impacted areas as quickly and safely as possible. We encourage residents to share their concerns with the California Public Utilities Commission.

Southern California Edison accepts claims for food loss due to Public Safety Power Shutoff events.

Here's what you'll need:

- An itemized list of all spoiled food
- Receipts for the spoiled food or other documentation, including cost
- Complete an online claim form at [Claims Online](#) | [Applications](#) | [Home](#) – SCE

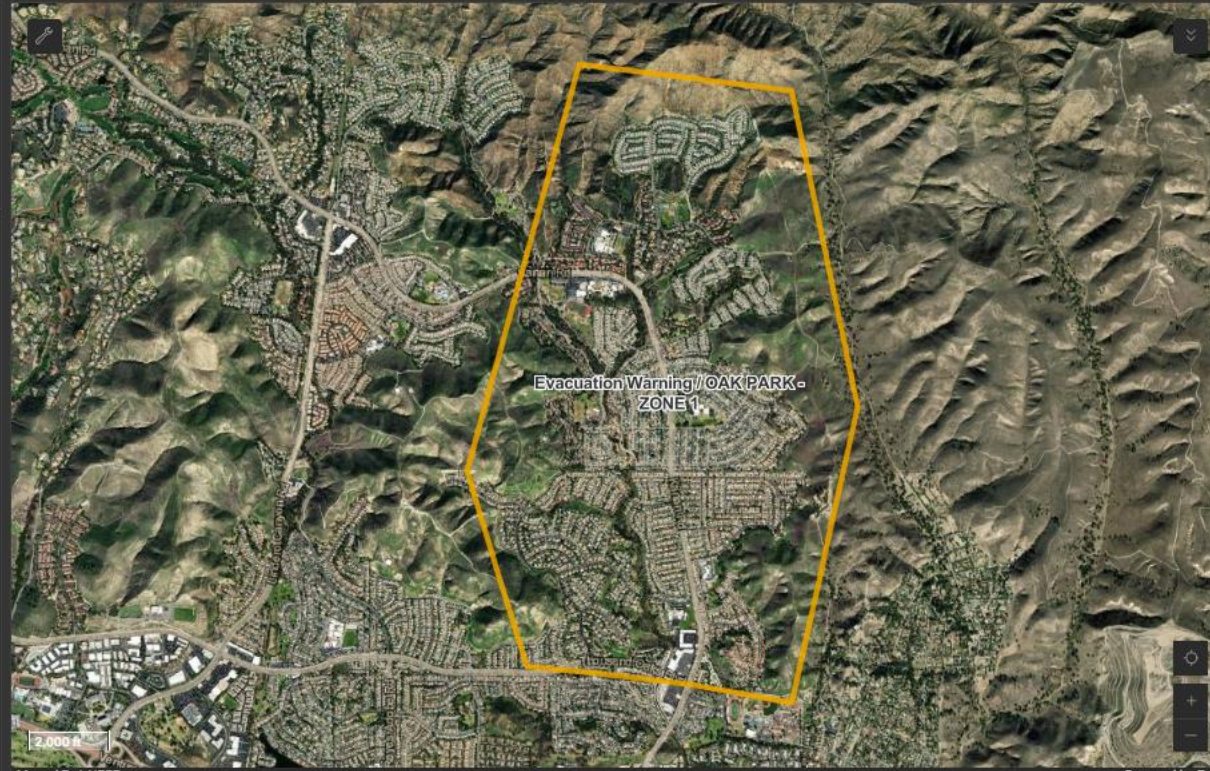
Be prepared to provide information on how you attempted to mitigate food losses by using ice or other methods. For additional help or

7:25 AM
1/30/2025



ACTIVE EVACUATION AREAS

Type: Evacuation Warning
 Zone: OAK PARK - ZONE 1
 Date Issued: 1/1/2025
 Time Issued: 6:00PM
 Date Lifted:
 Time Lifted:
 Shelter: No shelter is available at this time.
 Notes: Evacuation warning due to brush fire.



MAP LEGEND

Evacuation Perimeters

- Evacuation Order
- Evacuation Warning
- Shelter in Place
- Advisory
- Resident Access Only
- Evacuation/Advisory Lifted

Street Closures

- Road Closed - Hard Closure
- Road Closed - Soft Closure
- Road Open
- Resident Only Access

Temporary Evacuation Points

- Standby
- Activated
- Not in Service

SCE Community Resource Centers



Public Safety Power Shutoff Circuits

- Evacuations
- Circuits
- Evacuation Centers
- Road Closures
- Fire Calls

- Active Incidents Map
- Evacuation Terminology
- Current Weather

EVACUATION ORDERS

0

EVACUATION WARNINGS

1

SHELTER IN PLACE

0

EVACUATIONS LIFTED

0

NO CIRCUITS ARE PRESENTLY BEING MONITORED FOR PSPS

NO ACTIVE PSPS POWER OUTAGES TO REPORT AT THIS TIME

Evacuation Orders / Evacuation Warnings Southern California Edison - PSPS



How Will I Know?

- **In Person Notifications by Sheriff Deputies**
 - PA System
 - Hi-Lo Siren



Factors that Impact Timing

Situational Awareness: We do not always know what is going on!

Location of Hazard: What areas are being impacted

Coordination: Coordination between police / fire / emergency management / neighboring jurisdictions

Technology: It takes times to update websites / generate emergency alerts.



Take Charge of Your Safety!

STAY ALERT: Conditions can change quickly

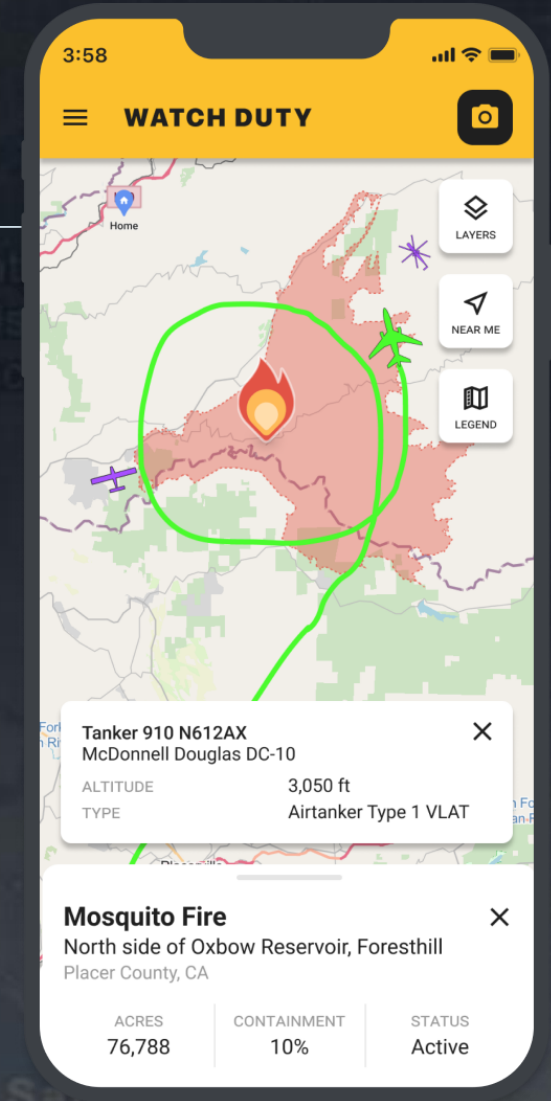
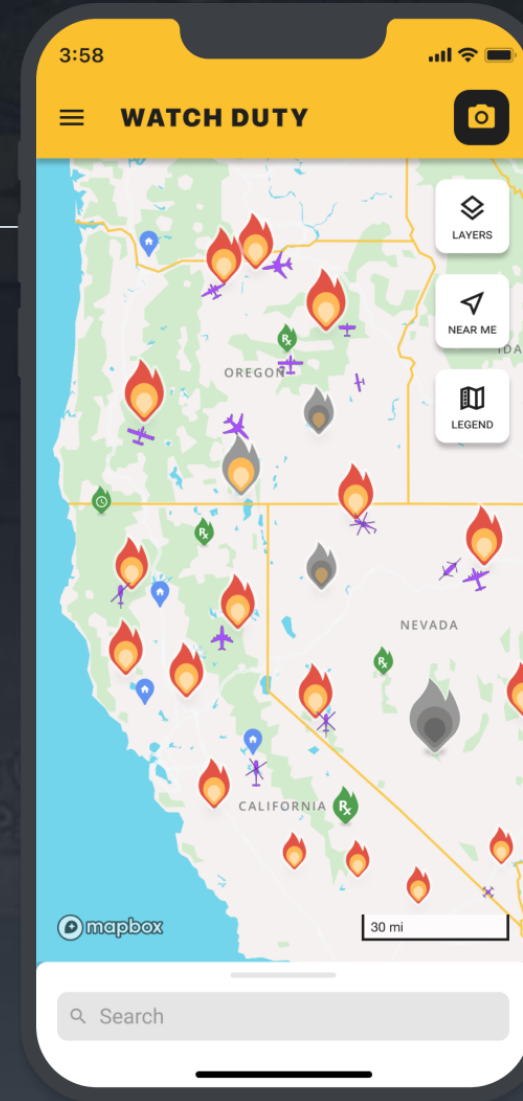
STAY INFORMED: VCEmergency.com

TAKE ACTION: Leave Early, Leave Often! Do not wait for official notification if you feel unsafe or see conditions worsening.



Watch Duty App

- Useful in many situations however this is not an official source of information.
- Text updates are often gleaned by people monitoring radio traffic and interpreting what they hear.
- Official source for information in VCEmergency.com



Access & Functional Needs

- If you require additional time or assistance evacuating, **TAKE EARLY ACTION** and start the evacuation process as soon as possible.
- If you live alone and require assistance, contact your neighbors **ahead of the incident** to arrange for help evacuating.
- **As an option of last resort**, If you do not have assistance and need to evacuate, **call 911!**



Limited Egress Areas - Piru

- Due to the limited number roadways leading to Piru, public safety will lean forward on issuing evacuation orders and warnings early to give residents as much time as possible.
- No magic solution to widespread evacuations.
 - Road closures may always be a limiting factor
 - Resources may not always be readily available to assist with traffic control or notifications.
- Residents must do their part to monitor conditions and leave early!



DO YOUR PART!



Stay
INFORMED



Make a
PLAN



Build a
KIT



Get
INVOLVED